

# GOVT. DEGREE COLLEGE DRANG AT NARLA

Teh. Padhar, Distt. Mandi (HP)- 175012

[www.gcdrangnarla@gmail.com](mailto:www.gcdrangnarla@gmail.com)

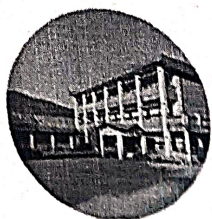
01908-260645

[www.gcdrang.ac.in](http://www.gcdrang.ac.in)



## 6. Faculty profile and research activities score

Sr.	Activity	Distribution of Score	Total score = 51 out of 100
1	% of teachers with Ph. D. $= \left( \frac{6}{15} \times 100 \right) = 40\%$	More than 70% =5 61-70%=4 51-60% =3, less than 50%=2	2
2	Teachers as Research Guides	4 points for research guidance ( max =8)	0
3	Number of teachers with Orientation programmes, Refresher programmes, Faculty Development programmes and Workshops of one week or more attended by Teachers ( in last 3 years) $= \left( \frac{15}{15} \times 100 \right) = 100\%$	30% of faculty =10, 20% of faculty =8, 10% of faculty =6, 5% of faculty =4	10
4	Projects/Patent/ Fellowship /Associate ships i) Major ii) Minor	Nil	0
5	Number of papers presented to conference seminars symposium in last 3 years i) International ii) National iii) regional state level	i) International =31*2=62 ii) National =32*1=32 Total = 94	8
6	Seminar, workshop, conferences and training organised by the institution	One Day National Conference on Education, Employment and Sustainable Development: A Vision for Viksit Bharat by 2047 (12 March, 2025)	4
7	Number of research papers published i) UGC care list Journals ii) non UGC care list journals iii) citations	Non- UGC Care List Journal = 5*2=10	10
8	Teachers special innovative ideas (brief description thereof)	<ul style="list-style-type: none"> <li>Implements modern, student-focused teaching methods aligned with current educational needs.</li> <li>Integrates digital tools with classroom instruction for flexible and effective learning.</li> <li>Promotes experiential, service-based, and interdisciplinary learning for practical exposure.</li> <li>Encourages active participation, collaboration, and peer mentoring among students.</li> <li>Enhances critical thinking, inclusivity, and overall teaching-learning outcomes.</li> </ul>	5



# GOVT. DEGREE COLLEGE DRANG AT NARLA

Teh. Padhar, Distt. Mandi (HP)- 175012

[www.gcdrangnarla@gmail.com](mailto:www.gcdrangnarla@gmail.com)



01908-260645



[www.gcdrang.ac.in](http://www.gcdrang.ac.in)



9	Number of books published chapters in books	One Chapter in Book = $1 \times 2 = 2$	2
10	Teachers academic and Extension activities	i) Resource person for School visits = $6 \times 2 = 12$ ii) Resource Person extra lectures = $2 \times 2 = 4$ iii) Member of Board Of Studies/Conference organizing committee = $4 \times 4 = 16$ iv) Member for organising National Conference = $15 \times 2 = 30$	10
11	Award by recognized and reputed organization	Nil	0

for

Principal  
Govt. Degree College Drang  
at Narla Distt. Mandi (H.P.)

Md Nanta Palmer